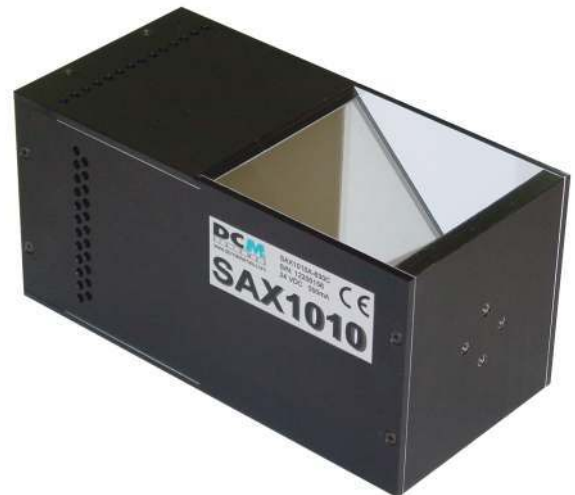


Diffuse Axial Illuminator

These systems allow light, from the camera axis by a diffused light, objects for inspection, avoiding shadows and reflections. It uses an opening of 100 x 100 mm and using LEDs of high luminosity, converting it into one with the highest luminosity system on the market. We offer the possibility of personalizing your axial lighting system, increasing or decreasing the quantity of light, making uniform the projected area, by using different wavelengths.



LIGHTING TECHNIQUE

Lighting mode: Diffuse Axial
Light source: 100 high intensity LEDs
Colour (nm): See table 1
LED life: Until 100.000 hours

ELECTRICAL

Max. power supply: 24VDC (Continuous models)
Max. consumption: 600mA (White Model)
Wire include: 1.8m
Wire terminal: Brown -> 24VDC
 Blue -> 0V (GND)

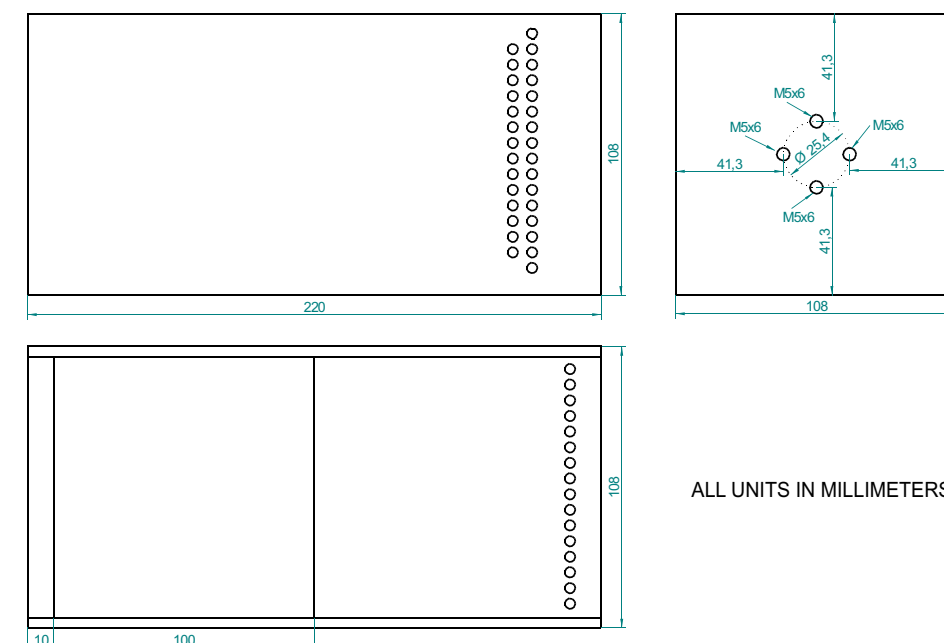
MECHANICAL

LxWxH: See external plane
Mounting: 4 (M5)
Housing material: Black anodized aluminium
Weight: 1615 g

ENVIRONMENTAL

Max. Operating Humidity: 95% non-condensing
Operating temp: 0..40°C
Storage temp: 0..60°C

EXTERNAL PLANE



ALL UNITS IN MILLIMETERS

SAX

MODELS

Table 1.

Ligth colour	Wavelength	Type	Reference
UV	400nm	Continuous	SAX1010A-400C
UV	400nm	Strobe	SAX1010A-400S
Blue	470nm	Continuous	SAX1010A-470C
Blue	470nm	Strobe	SAX1010A-470S
Green	525nm	Continuous	SAX1010A-525C
Green	525nm	Strobe	SAX1010A-525S
Red	630nm	Continuous	SAX1010A-630C
Red	630nm	Strobe	SAX1010A-630S
Near infrared	880nm	Continuous	SAX1010A-880C
Near infrared	880nm	Strobe	SAX1010A-880S
Infrared	940nm	Continuous	SAX1010A-940C
Infrared	940nm	Strobe	SAX1010A-940S
White	-----	Continuous	SAX1010A-W00C
White	-----	Strobe	SAX1010A-W00S
Others	-----	----	Consult

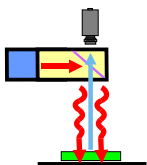
COMPLEMENTS

Table 2.

Complement	Type	Reference
Strobe controller with 3 outputs	Strobe	VST33I

LIGHTING MODES

DIFFUSE AXIAL LIGHT



As the light comes from the same axis of the camera, the projected shadow picked up by the camera because it's produced vertically. In shiny flat surfaces, the camera would see reflected its own objective if this method of lighting weren't used. So that, this equipment is indicated to check shiny flat surfaces and deep cavities.