

The ringlight allows the illumination of objects from the axis of the camera, which can be easily adapted different optics and several areas of supervision.

The frontal light allows the lighting of objects without lustre, giving images of high intensity and contrast, standing out textures.



ALD

**LIGHTING TECHNIQUE**

**Lighting mode:** Direct  
**Light source:** 140 high intensity LEDs  
**Colour (nm):** See table 1  
**LED life:** Until 100.000 hours

**MECHANICAL**

**LxWxH:** See external plane  
**Mounting:** 3 (M4) & 3 (M5 DIN913)  
**Housing material:** Black anodized aluminium  
**Weight:** 500 g

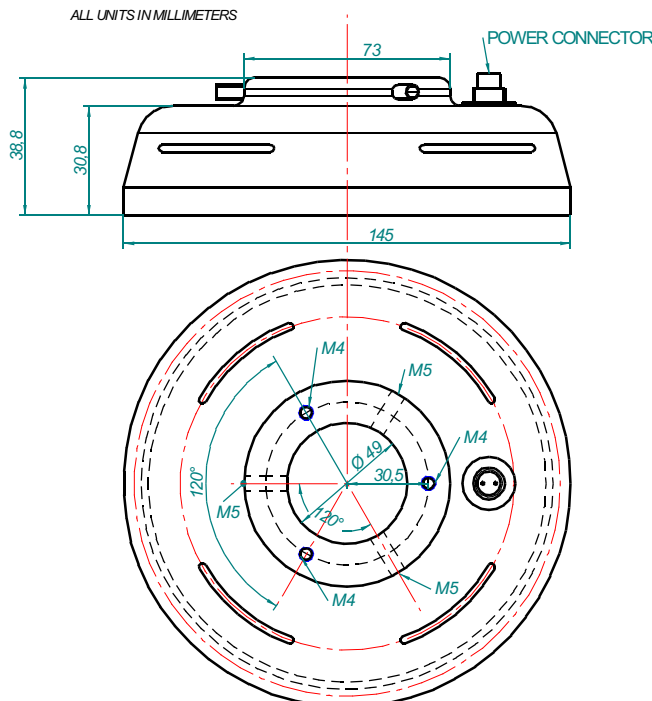
**ELECTRICAL**

**Max. power supply:** 24VDC (Continuous models)  
**Max. consumption:** 740mA (white model)  
**Wire include:** VCB018 (See table 2)  
**Wire terminal:** Brown -> 24VDC  
 Blue -> 0V (GND)

**ENVIRONMENTAL**

**Max. Operating Humidity:** 95% non-condensing  
**Operating temp:** 0..40°C  
**Storage temp:** 0..60°C

**EXTERNAL PLANE**



### MODELS

Table 1.

| Ligth colour  | Wavelength | Type       | Reference     |
|---------------|------------|------------|---------------|
| UV            | 400nm      | Continuous | ALD1108A-400C |
| UV            | 400nm      | Strobe     | ALD1108A-400S |
| Blue          | 470nm      | Continuous | ALD1108A-470C |
| Blue          | 470nm      | Strobe     | ALD1108A-470S |
| Green         | 525nm      | Continuous | ALD1108A-525C |
| Green         | 525nm      | Strobe     | ALD1108A-525S |
| Red           | 630nm      | Continuous | ALD1108A-630C |
| Red           | 630nm      | Strobe     | ALD1108A-630S |
| Near infrared | 880nm      | Continuous | ALD1108A-880C |
| Near infrared | 880nm      | Strobe     | ALD1108A-880S |
| Infrared      | 940nm      | Continuous | ALD1108A-940C |
| Infrared      | 940nm      | Strobe     | ALD1108A-940S |
| White         | -----      | Continuous | ALD1108A-W00C |
| White         | -----      | Strobe     | ALD1108A-W00S |
| Others        | -----      | ----       | Consult       |

**PL** This system can be polarized. Add /FPL at the end of the reference for request it.

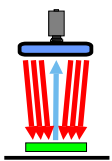
### COMPLEMENTS

Table 2.

| Complement                       | Type   | Reference |
|----------------------------------|--------|-----------|
| Wire 1.8 m                       | Wire   | VCB018    |
| Wire 2.5 m                       | Wire   | VCB025    |
| Wire 4.0 m                       | Wire   | VCB040    |
| Strobe controller whit 3 outputs | Strobe | VST33I    |

### LIGHTING MODES

#### RADIAL DOWN LIGHT (STRONG LIGHT)



When the lighting comes from all the perimeter of the axis of the camera, it reduces shadows, softens textures and minimizes the influence of fissures, dust and faults that the object have. The down light, due to the small opening of the beam, allows the system to be employed for further distances of the object and provides a great quantity of light.

Ideal for the detection of different colours marks, characters and of everything that supposes a change in colour on flat bright surfaces as well as in rough ones in high distances.